



STATE WIDE HIGH SPEED
OPTICAL FIBER INFRASTRUCTURE

TRIPLE PLAY SERVICES



IPTV



Internet



Telephony



Andhra Pradesh State FiberNet Limited

3rd Floor, NTR Administrative Block, Pandit Nehru Bus Station,
NH – 65, Vijayawada - 520001, Andhra Pradesh, India.

apsfl@ap.gov.in | www.apsfl.in

Toll Free Number : 1800 599 5555 | Email ID : care@apsfl.co.in



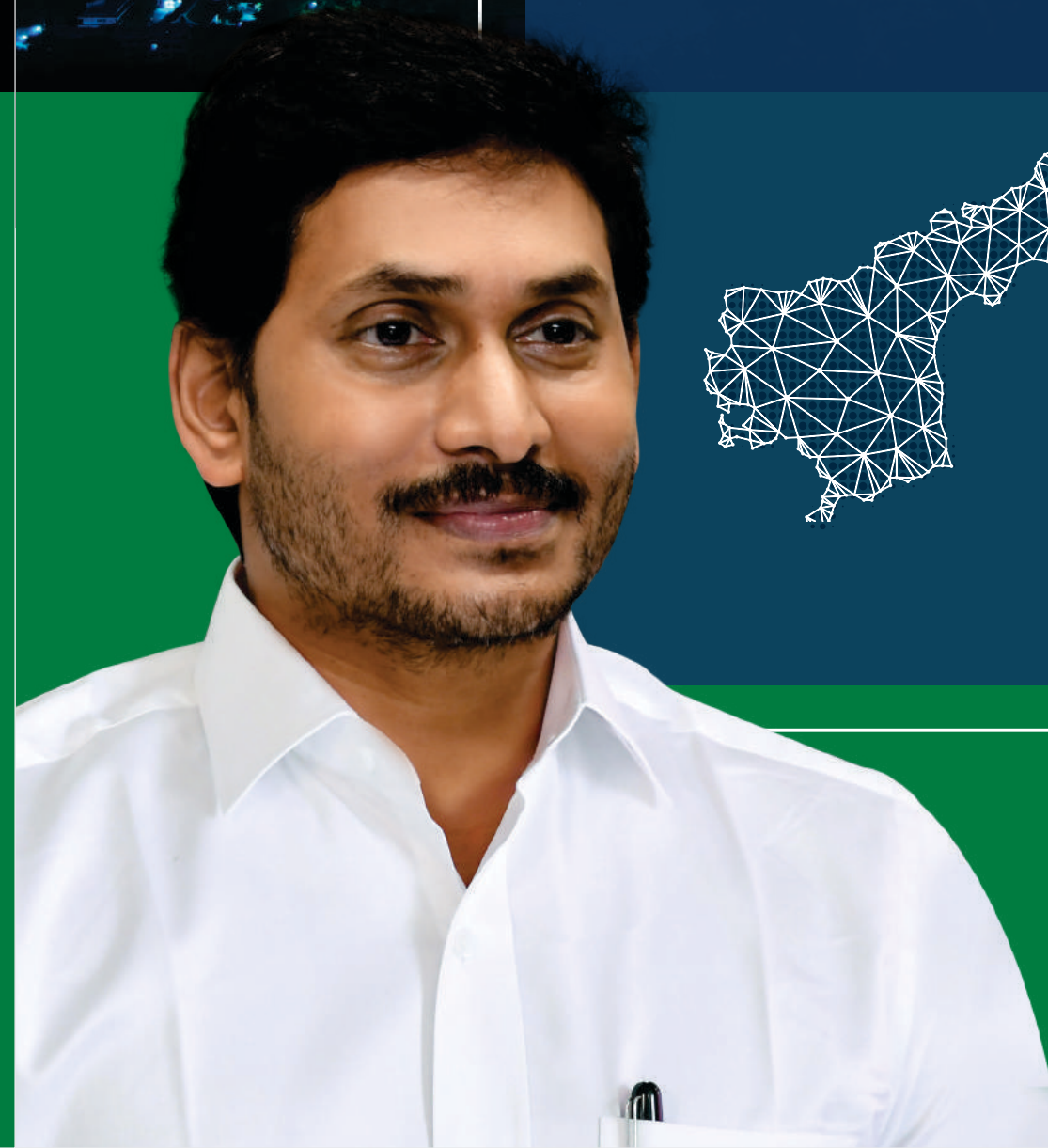
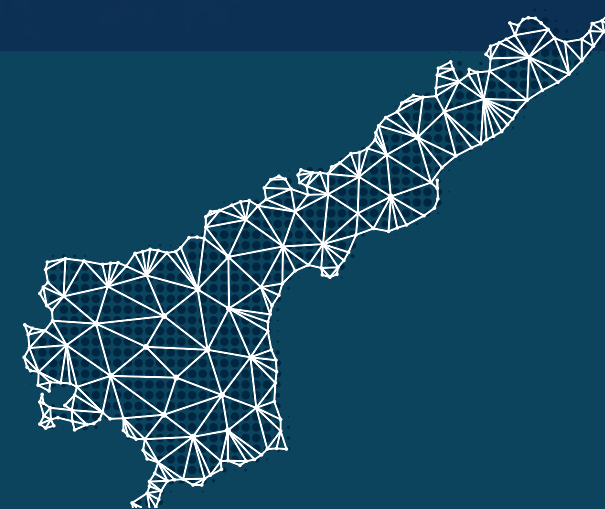
www.twitter.com/fiberap



www.facebook.com/FiberAp

AP fiber
**ANDHRA PRADESH STATE
FIBERNET LIMITED**

Connecting Andhra Pradesh through
High Speed Fiber Internet.



Shri Y.S. Jagan Mohan Reddy
Hon'ble Chief Minister
Govt. of Andhra Pradesh



VISION OF HON'BLE CHIEF MINISTER

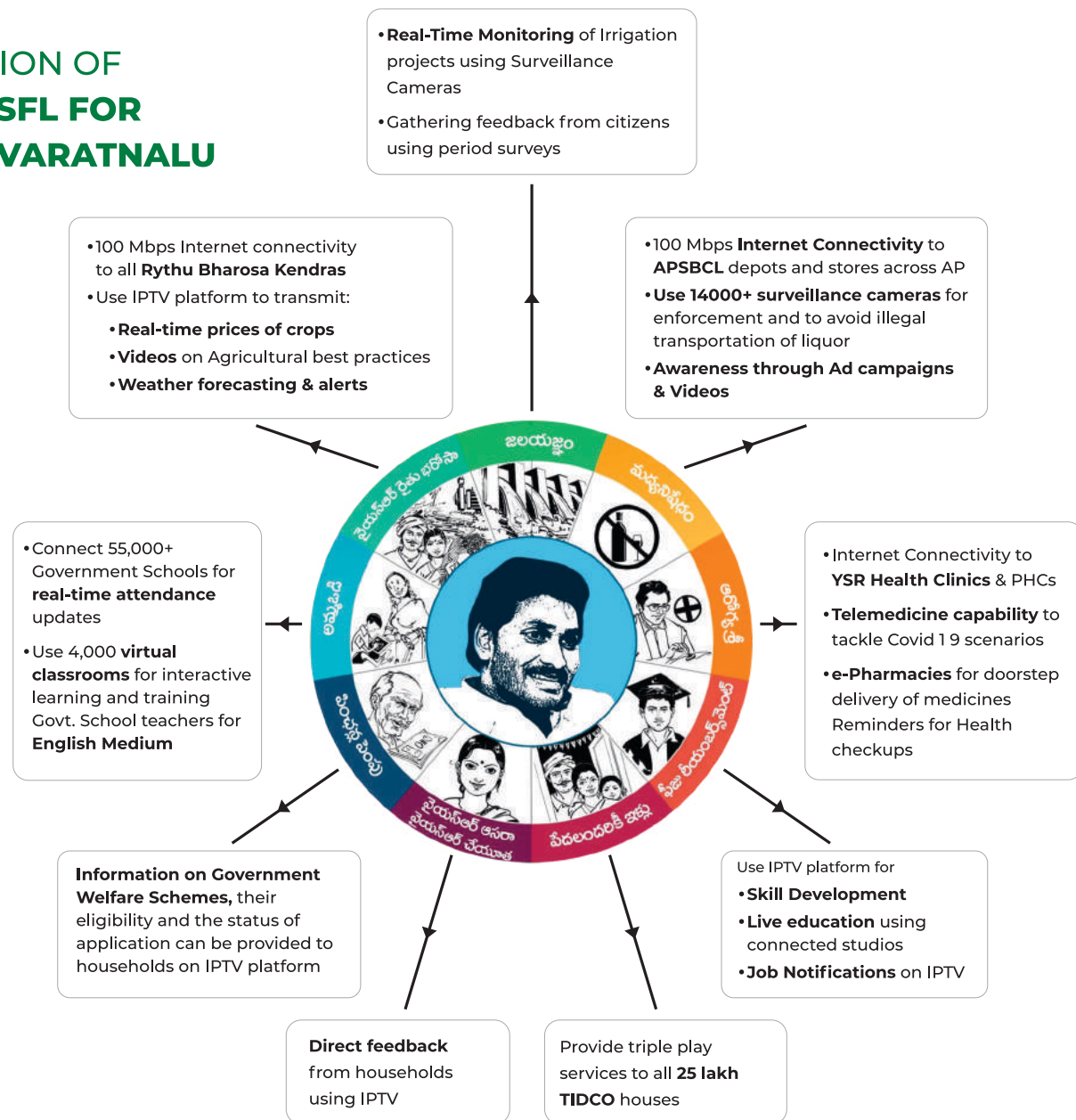
High speed internet connectivity to all villages in the state of Andhra Pradesh & Digitalization of Gram Panchayat and Local Governance.

To bridge urban-rural digital divide by establishing **high-speed Optical fiber connectivity** in each and every village.

To facilitate the rural youth to exercise their **right to internet access** within their reach and within their means.

To promote digital inclusiveness & to provide **Triple Play Services (Internet, TV & Telephone)** to all households in the State of Andhra Pradesh with most affordable prices.

VISION OF APSFL FOR NAVARATNALU



ABOUT APSFL

Andhra Pradesh State FiberNet Limited (APSFL) was incorporated to promote Digital inclusiveness and bridge urban-rural divide by providing affordable, high-speed broadband connectivity to households, deepening the reach of internet in the rural areas. Network infrastructure was laid out for providing triple play services (IPTV, Internet, Telephony) to households and Govt/Private Enterprises through IP MPLS (Internet Protocol Multi-Protocol Label Switching) & GPON (Gigabit Passive Optic Network) technologies.

Further, APSFL Network can also be utilised by the Internet Service Providers (ISPs) and Telecom Companies (Telcos) etc. who can utilise the information highway / bandwidth under AP Fiber Grid to enhance their services and deepen their reach. The partners who provide the last mile connectivity through AP Fiber Grid by hooking to the PoPs/NOC can immensely benefit from this system as they can provide triple play - IP TV, high-speed broadband and Telecom under a single umbrella, thus enhancing the scope for revenue generation. They will become the last mile operators, the key link between the AP Fiber Grid and the end-user.

BENEFITS OF AP FIBER



Bridge urban-rural digital divide with ubiquitous access to High Speed Internet



Implement 'Public Wi-Fi' project to provide free high-speed broadcast to citizen across state



Provide Connectivity to Village Secretariats to enable real-time assessment and evaluation



Utilize BBNL Network at Gram Panchayat level to increase coverage, capacity and performance



State-owned broadcasting platform to transmit Info on government schemes



Create earning opportunities to 30,000 LCOs & indirect employment to 50,000+ citizens



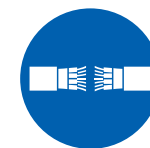
14,000+ Surveillance cameras leverage APSFL's network to support law enforcement agencies



Provide doorstep delivery of various G2C service and complement Village Volunteers



Provide expert guidance to remote, rural school through Virtual Classrooms project



Provide connectivity to Uncovered, Remote and Tribal Regions across the state

INFRASTRUCTURE

- State-of-the-art Network Operations Centre containing the IPTV Headend, Broadband Network Gateway Servers, Caching & Peering Servers and Telecom Switches
- 24 Core ADSS Optical Fiber Cable (OFC) laid across the state using 3.7 Lakh electrical poles spanning a length of **24,000 KM** and additional **55,000 KM** OFC network through BharatNet Project connecting 11,274 Gram Panchayats in AP
- Back-end electronics – Routers, Switches & OLTs deployed at 2600 Points of Presence (PoPs) located in electrical sub-stations of AP Discoms
- Integrated network of around **80,000 KMs** connecting State Head Quarters, District HQ to Zonal HQ to Mandal HQ and Gram Panchayats.



APSFL DC- DR ARCHITECTURE

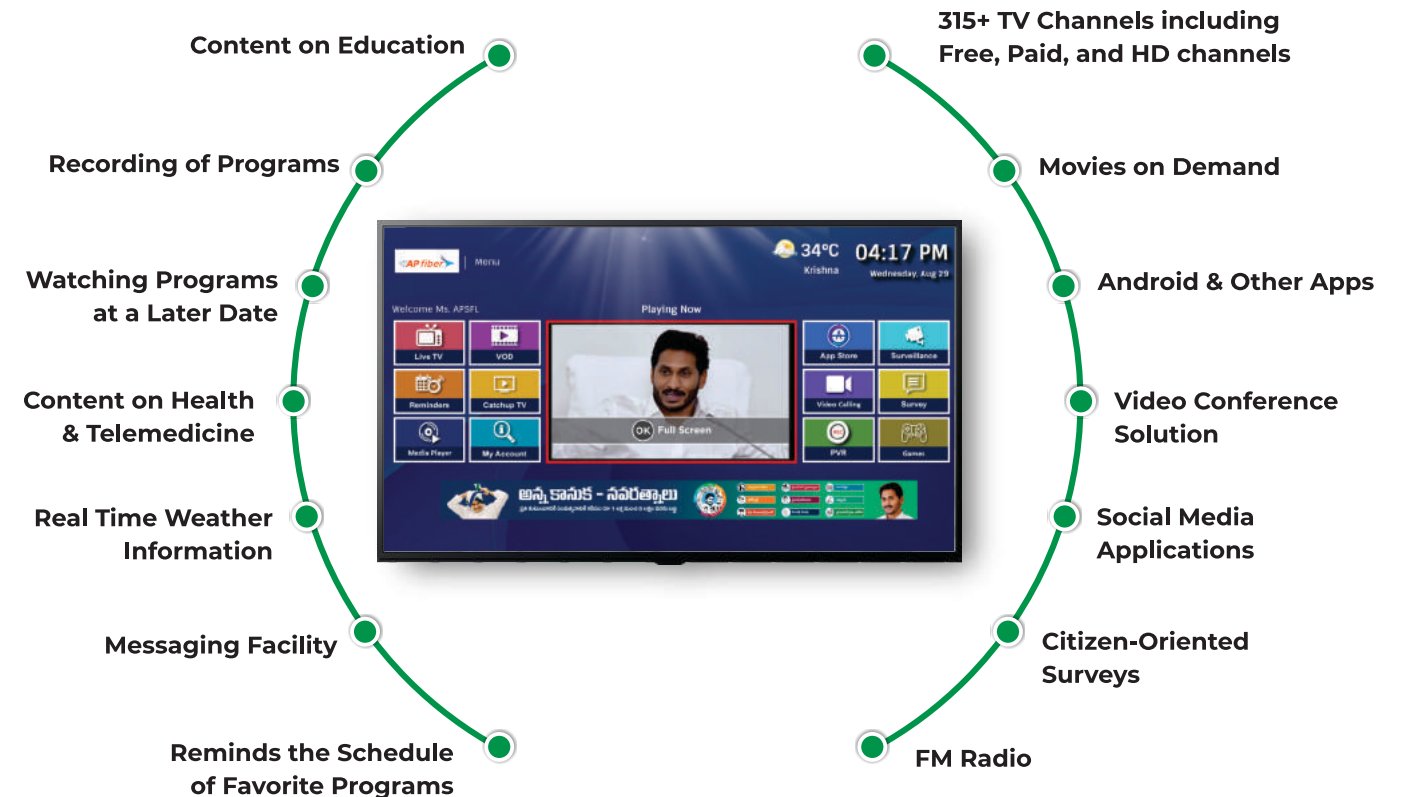
- As part of APSFL expansion plan, A new world class DC/DR Architecture is proposed.
- Datacenter will be at Vishakapatnam and the replication of DC will be at Tirupathi as DR.
- All applications used for the BBNL Phase II Network will be hosted at DC and replication of DC will be to DR.

SERVICE DELIVERY MODEL

APSFL network is based on Next Generation Network (NGN) based architecture and caters to the FTTH access needs. This architecture defines a hierarchical network transport infrastructure for enabling seamless transportation & integration of required services and various components to deliver the triple play services. APSFL's entire network can broadly be classified into 4 logical components:

- **NOC & Data Center**
- **Access Network**
- **Transport Network**
- **Last Mile Network.**

AP FIBER'S IPTV – MORE THAN CABLE TV



APSFL ENTERPRISE SERVICES

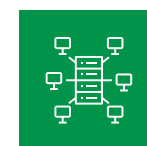
APSFL Enterprise business is primarily to support Digital AP program to reach high speed internet connectivity to all Gram Panchayats and Tribal regions. Also APSFL is providing high speed internet connectivity to all Government Departments, Education, SME and Enterprise.



Last 3 Years Achievements:

APSFL acquired Prestigious Government and SME projects like:

- | | |
|--|--|
| 1. APSDWAN | 9. AP State Housing Corporation Ltd |
| 2. Village & Ward Secretariats | 10. AP Mineral Development Corporation |
| 3. Rythu Bharosa Kendram | 11. AP State Ware Housing Corporation Ltd |
| 4. Primary Health Centre's | 12. Department of registrations and Stamps |
| 5. Post Offices | 13. AP Skill Development Corporation |
| 6. Integrated Tribal Development Authority(ITDA) | 14. Airtel |
| 7. Virtual Classroom Schools | 15. Jio |
| 8. AP Social Welfare Schools | 16. Andhra Pradesh MedTech Zone Limited |
| | 17. Sri City |



Enterprise Broadband



Internet Leased Line



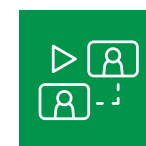
MPLS VPN Services



Teleconference Services



IVRS Services



Virtual Classrooms



CCTV Surveillance

APSFL SERVICES TO HOUSEHOLDS

APSFL provides Triple Play Services (Internet, IPTV & Telephone) to 9 Lakhs+ households across the state of Andhra Pradesh

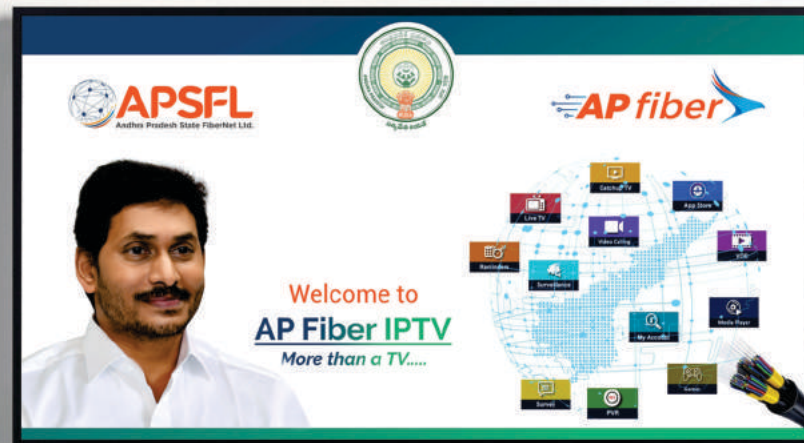
Internet: High Speed Internet connectivity – 15 Mbps to 100 Mbps.

IPTV: Access to 315+ TV Channels, OTT Apps, Govt. Apps, Games, Video Conferencing, Browsing Apps, Video on Demand (Content on Education, Jobs, Health, Agriculture etc)

Telephone: No rentals. Calls free within APSFL Network in Basic Package. Unlimited Calling in higher packages.

HOME BASIC	HOME ESSENTIAL	HOME PREMIUM
200+ Channels 20 Mbps Speed 150 GB FUP Limit 2 Mbps Post FUP Unlimited On-Net Calling	240+ Channels 30 Mbps Speed 300 GB FUP Limit 2 Mbps Post FUP Unlimited Local Calling	245+ Channels 50 Mbps Speed Truly Unlimited* Unlimited Local & STD Calling
₹ 350 (Incl. 18% GST)	₹ 449 (Incl. 18% GST)	₹ 599 (Incl. 18% GST)

Unlimited Local & STD calls (Incl. BSNL Landlines)
@ just ₹ 99/month (GST Extra)



APSFL - MAJOR PROJECTS

To meet our Hon'ble CM Visionary towards the Digitalization of Gram Panchayat and Local Governance, APSFL is glad to inform that AP fiber is associated with the following Major Government and Private Enterprises for the provision of Internet Connectivity.

- | | |
|---|--|
| • Connectivity to APSDWAN Project | • Digital Village Library |
| • Connectivity to Raithu Bharosa Kendras | • Strengthening The Teleco's Network & Coverage |
| • Village/ Ward Secretariats | • YSR Jagananna Colonies |

APSFL SERVICE ASSURANCE

1. Under the Essential Service Act, APSFL aims to serve the services (at 24x7) to the customers without any interruption.
2. In order to provide the uninterrupted services to our clients, APSFL has introduced own FRT(Fiber Rectification Team) Team throughout all districts in AP for the immediate restoration of the service.
3. APSFL has also separate OCC and Service Assurance Team located at Head Office, Vijayawada which is the first point of contact of all registered LCOs / MSOs and all Enterprise Customers.

LIVELIHOOD

APSFL takes its pride in the fact that it has provided the platform of direct/indirect livelihood to 50,000 families across the state.

APSFL - ROAD MAP FOR FUTURE GOALS

1. APSFL Targeting to provide triple play connectivity to 20 Lakh households and 3 lakh government/private offices.
2. Through BharatNet Phase 2 project, APSFL is planning to expand its reach to all Gram Panchayats in the state by completing the project by end of FY 2021-22.
3. APSFL is also targeting to enhance existing telecom infrastructure in the state by providing fiber connectivity to Telecom towers.
4. APSFL is also planning to connect all uncovered, remote and tribal regions across the state of Andhra Pradesh.